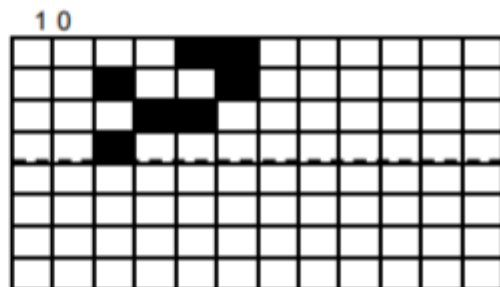
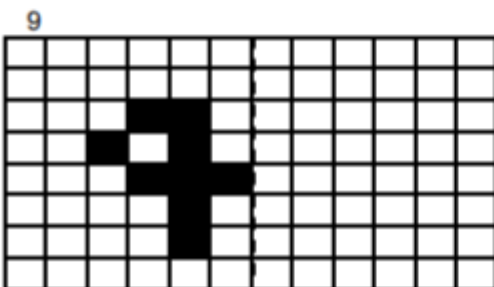
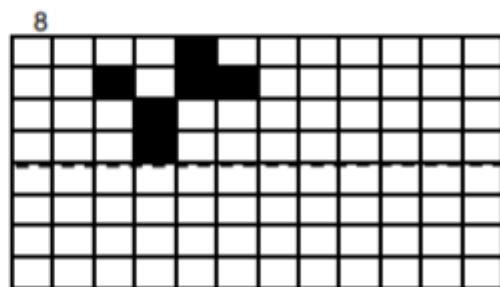
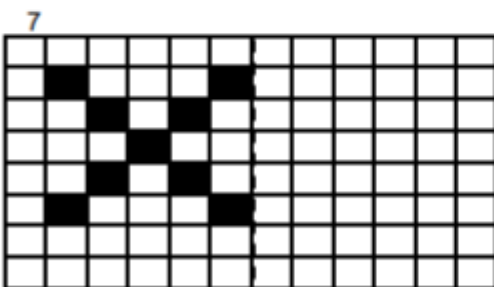
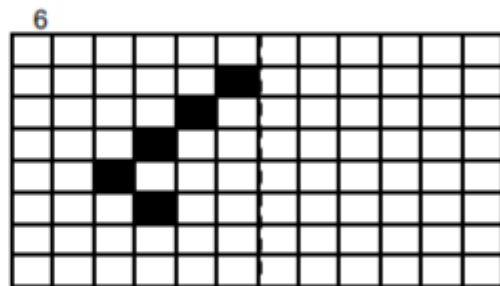
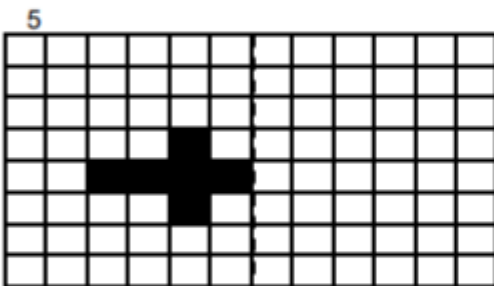
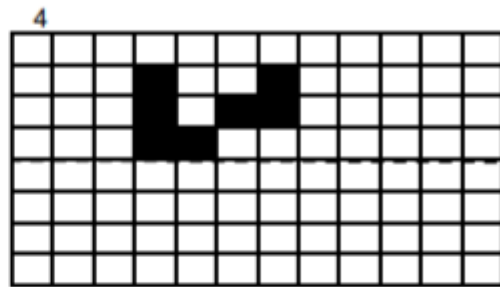
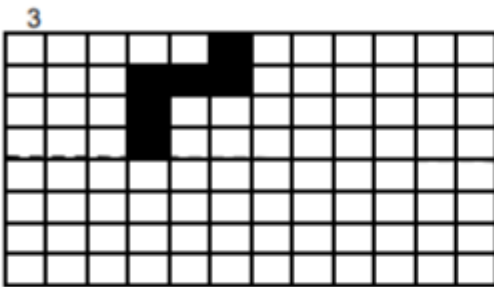
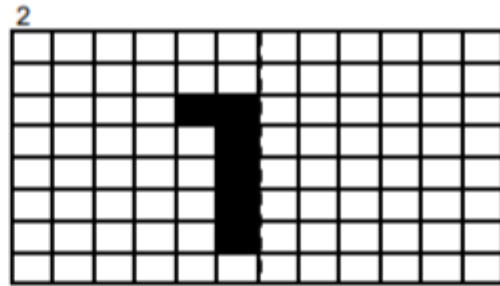
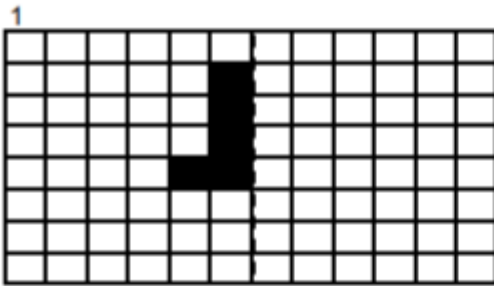


Tuesday - Independent Activity

Remember, you can add the coordinates onto each grid to help



E4E: Which of these have been reflected in the mirror line? Explain your reasoning.

Which of the images have been reflected on the mirror line?

The image contains six grid-based puzzles, each with a dashed mirror line and a checkbox:

- Top-left:** A vertical dashed mirror line. Two blue triangles are shown on the left side of the line. A checkbox is at the bottom left.
- Top-middle:** A vertical dashed mirror line. Two yellow chevrons are shown on the left side of the line. A checkbox is at the bottom left.
- Top-right:** A vertical dashed mirror line. Two grey rounded rectangles are shown on the left side of the line. A checkbox is at the bottom left.
- Bottom-left:** A horizontal dashed mirror line. Two red rectangles are shown on the top side of the line. A checkbox is at the bottom left.
- Bottom-middle:** A horizontal dashed mirror line. Two green L-shaped figures are shown on the top side of the line. A checkbox is at the bottom left.
- Bottom-right:** A horizontal dashed mirror line. Two yellow parallelograms are shown on the top side of the line. A checkbox is at the bottom left.