

## Maths

### Lesson 1

LO: To convert between different units of measurement.

How many:  
mm to 1 cm?  
cm to m?  
m to km?

What is the rule when converting?

Yes there are 10mm to 1cm, 100cm to 1m and 1000m to 1km.

Have a go at this task:

To change from cm to mm \_\_\_\_\_ by \_\_\_\_\_  
To change from kg to g \_\_\_\_\_ by \_\_\_\_\_  
To change from ml to l \_\_\_\_\_ by \_\_\_\_\_

multiply 10 100  
divide 1000

#### Activity:

If 1000g = 1kg  
1000ml = 1 litre

Solve: 2kg = \_\_\_\_\_ g  
3 litres = \_\_\_\_\_ ml  
4.5kg = \_\_\_\_\_ g  
2300ml = \_\_\_\_\_ l

- Complete the statements:

100cm = \_\_\_\_\_ m  
1km = \_\_\_\_\_ m  
1500ml = \_\_\_\_\_ l  
3.5kg = \_\_\_\_\_ g

I have attached a poster to help you convert the different units of measurements.

### Lesson 2

LO: To understand how to convert between different time periods.

How many seconds in a minute?  
Hours in a day?  
Weeks in a year?  
Days in a year?  
Months in a year?  
Days in a month?

#### Answers:

60 seconds, 24 hours, 52 weeks, 365 days (366 days if it's a leap year), 12 months, it depends – 28,29,30 or 31 depending on the month.

How can we convert 2 weeks into days?

We know there are 7 days in one week so  $7 \times 2 = 14$  days.

Watch this: <http://studyjams.scholastic.com/studyjams/jams/math/measurement/converts-units-time.htm>

How many seconds in 5 minutes?

$5 \times 60$  (use a method to solve this – you could use grid method or multiply  $5 \times 6$  and then make the answer 10 times bigger as you are actually multiplying by 60.)

How many months in 10 years?

$12 \times 10 =$

Activity:

Select a question, write down the calculation and then solve it.

e.g How many days in 7 weeks?  $7 \times 7 = 49$  days

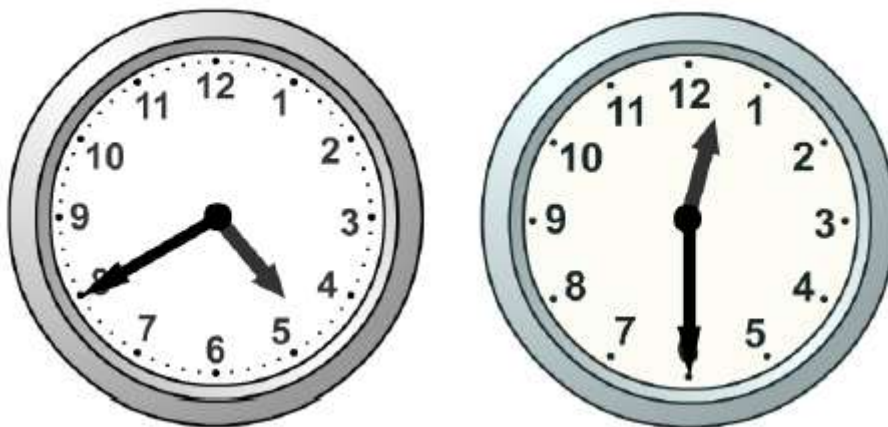
There is a separate answer sheet.

### Lesson 3

LO: To understand how to read and record time on an analogue clock.

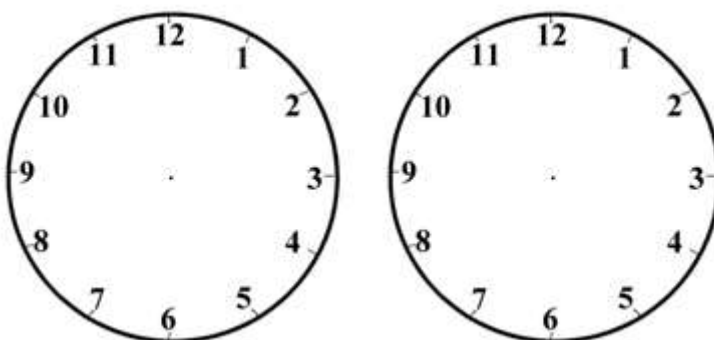
Watch this to recap reading time:

<http://studyjams.scholastic.com/studyjams/jams/math/measurement/tell-time.htm>



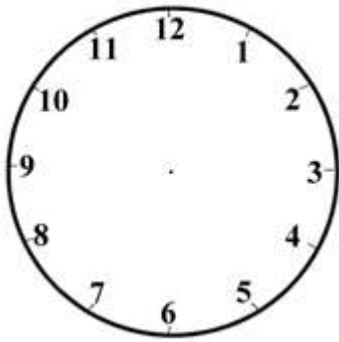
What time do these clocks say?

4.40 or 20 minutes to 5 and 12.30 or half past 12.



Show half past 8

Show 5.25am



Show 7 minutes to 9

Activity:

Choose either Option 1, 2 or 3 questions and complete the time on the blank clock faces.

Lesson 4

LO: To understand how to convert between 12 and 24 hour clocks.

What is the difference between am and pm?

Yes, am is morning and pm is afternoon and evening.

Why do you think it is useful to know these?

Recap:

Digital / 24 hour	Analogue / 12 hour
00:00	12:00 midnight
01:00	1:00am
02:00	2:00am
03:00	3:00am
04:00	4:00am
05:00	5:00am
06:00	6:00am
07:00	7:00am
08:00	8:00am
09:00	9:00am
10:00	10:00am
11:00	11:00am
12:00	12:00 midday
13:00	1:00pm
14:00	2:00pm
15:00	3:00pm
16:00	4:00pm
17:00	5:00pm
18:00	6:00pm
19:00	7:00pm
20:00	8:00pm
21:00	9:00pm
22:00	10:00pm
23:00	11:00pm
00:00	12:00 midnight

So 02.15 would be am in the 24 hour clock, whereas 14.15 is pm also in the 24 hour clock. So one is in the morning and the other is in the afternoon.

Activity:

Complete the table.

12 hour	24 hour
10.45am	
11.05pm	
3.40pm	
11.15am	
5.43am	
3.12pm	
10.36pm	
1.01am	
4.55pm	
7.15pm	
8.15am	
5.37pm	
12.05am	
12.05pm	
2.11pm	

See resources.

### Lesson 5

#### Problem solving

Can you put these 12 mixed-up times in order? You could arrange them in a circle. You could use blank clock faces to help you.



12.17



9.37



11.04



7.49



5.02



2.56

You need to read the time on the clocks to help you order all 12 times.

See the sheets attached.