

How to play

Shuffle the cards in the pile.

Place the cards face down on the table (in two rows of five).

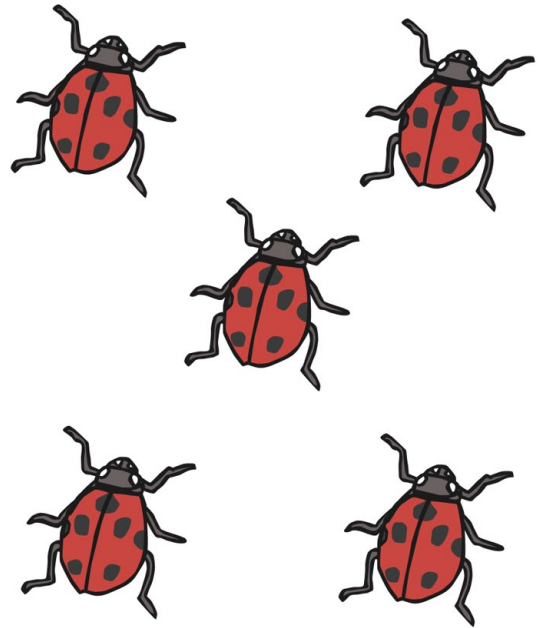
Begin by turning over two cards. Do they total 10? If they do, place them to one side. If they don't, turn them face down again and try to find another number bond pair.

Can you remember where each card is?

Challenge: Time yourself! How long does it take for you to find all of the number bonds to 10?

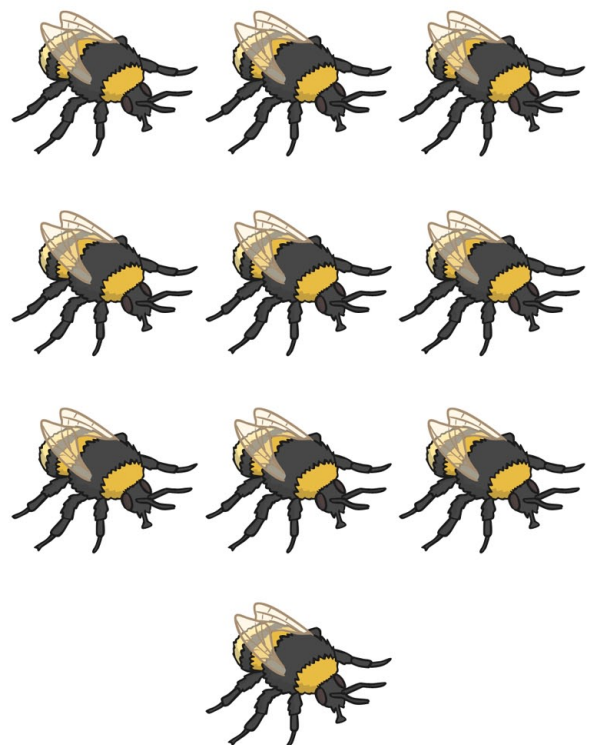
[twinkl.co.uk](https://www.twinkl.co.uk)

5



[twinkl.co.uk](https://www.twinkl.co.uk)

0

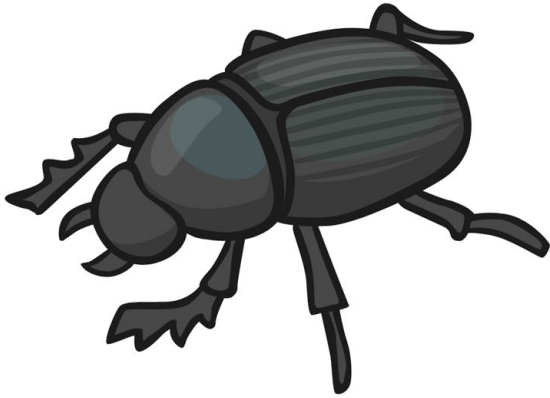


[twinkl.co.uk](https://www.twinkl.co.uk)

10

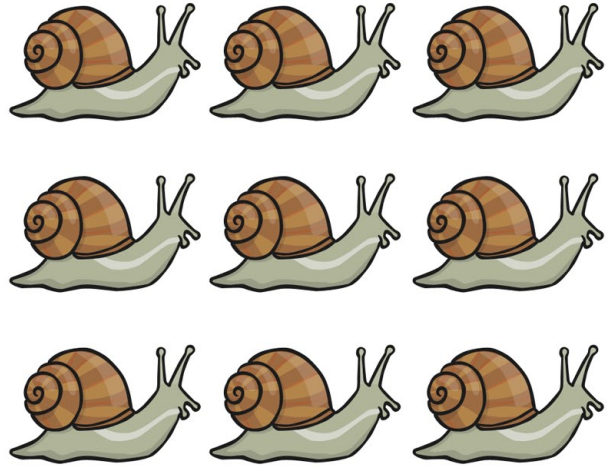
[twinkl.co.uk](https://www.twinkl.co.uk)

1



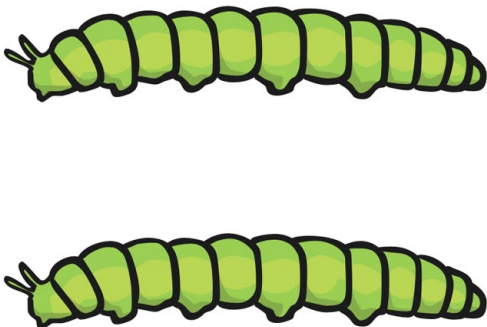
twinkl.co.uk

9



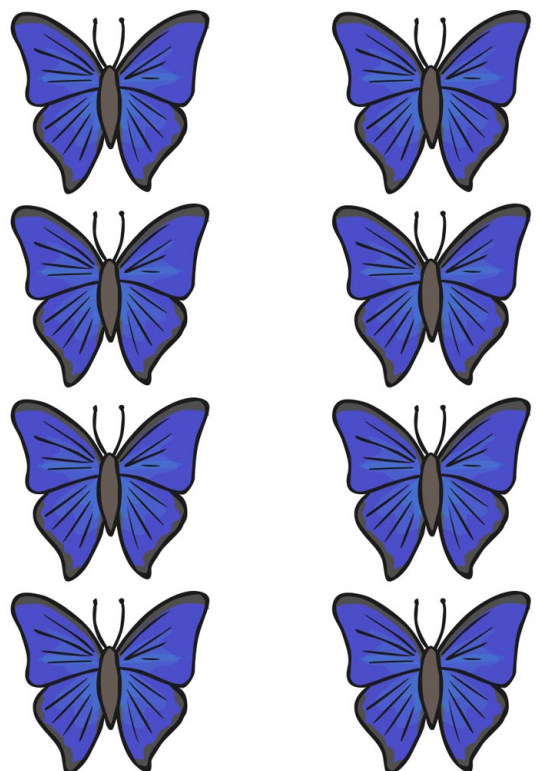
twinkl.co.uk

2



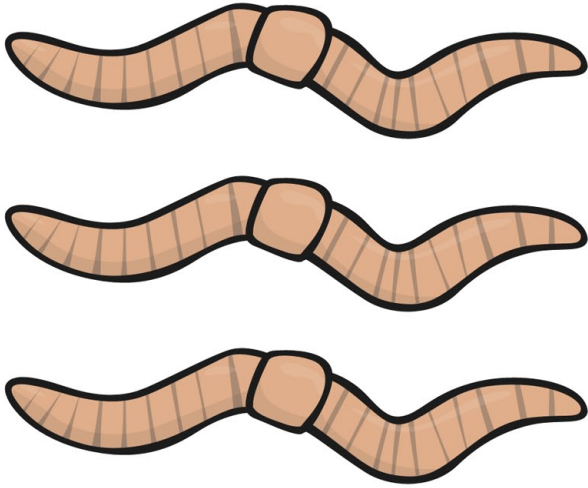
twinkl.co.uk

8



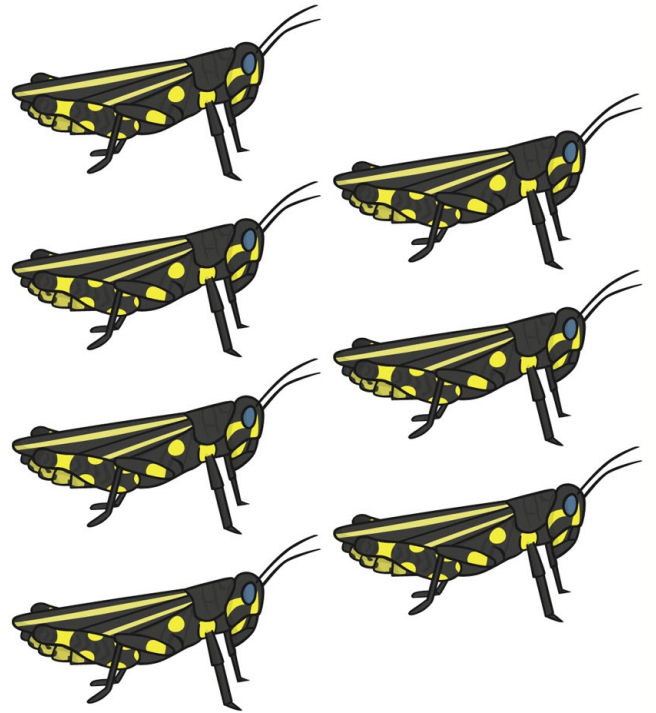
twinkl.co.uk

3



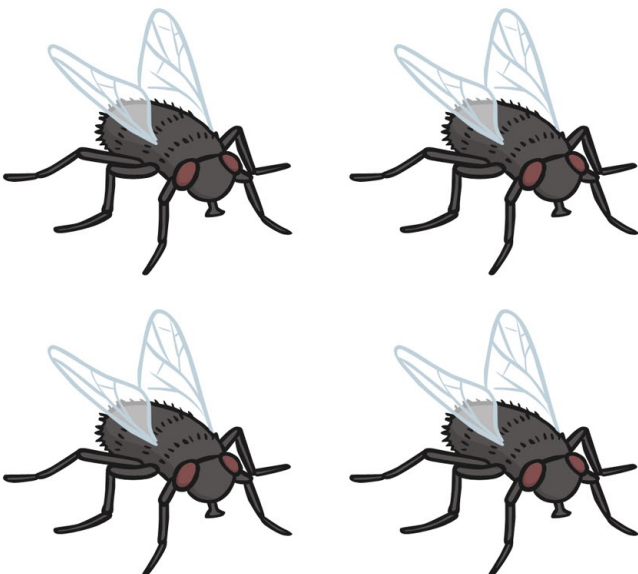
twinkl.co.uk

7



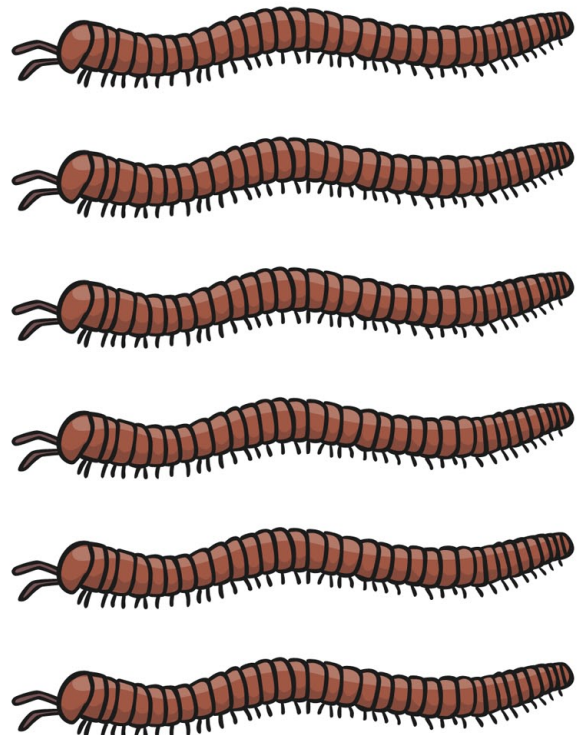
twinkl.co.uk

4



twinkl.co.uk

6



twinkl.co.uk

5

