

WALT find places on a
map of the United
Kingdom



I can find where Leicester and London
are on a map

I can name the four countries of the
United Kingdom

Did you know our school once had a teacher who is really famous?

Who do you think it is?

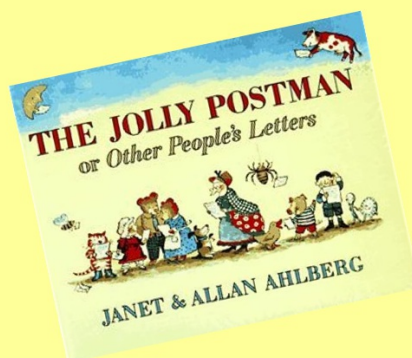
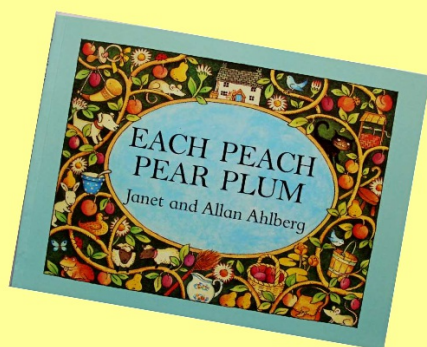
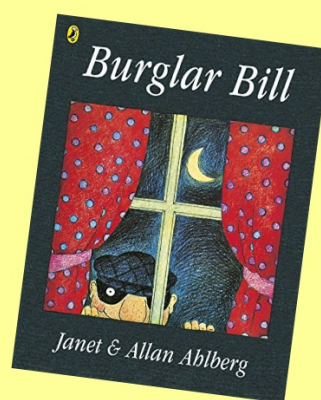
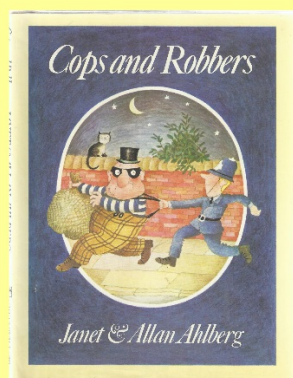
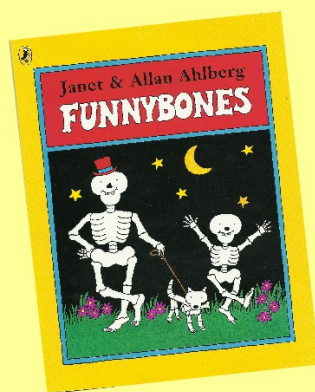


It's this man!



Who could he be? I'll give you a clue...

Something to do with these books...



It's Allan Ahlberg!



And, with his wife Janet, he wrote all of the books we've just seen. Do you know any of them?

Funny Bones 

Burglar Bill 

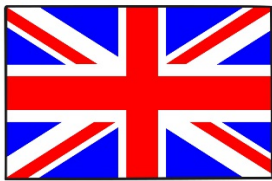
Cops and Robbers 

Each Peach Pear Plum 

The Jolly Postman 

Choose and watch one of the stories!

This is the United Kingdom (UK) where Allan Ahlberg lives.



Baby Allan Ahlberg



Deputy Head Teacher
Allan Ahlberg



Help the children to stick the flags and country names in the correct countries.



Wales



Northern
Ireland



England



Scotland

Allan Ahlberg was born in London in 1938. Find London on your map and stick baby Allan there.

He was Deputy Head Teacher of our school in _____. Our school is in Leicester, stick Deputy Head Teacher Allan there.

